



China and Doll Kilns

MINI-KILNS Small in **SIZE**
BIG in Performance

NOW meet the **MIGHTY MINIS**

Tired of waiting for what seems forever, to have your work fired? Wait no longer! The Freeman Fast Firing Mini-Kilns have been designed with *YOU* in mind.

Now you can experience the thrill of opening your own Kiln after yet another successful firing. There is nothing like it. You control everything from start to finish.

Fire when *YOU* want to and in the comfort of your own home.

EASY TO OPERATE

These rugged Kilns have a simple, variable control switch and plug into a normal household powerpoint...**NO COSTLY INSTALLATION.**

Each Kiln is carefully constructed from top quality materials and is fully tested prior to delivery.

SAFETY AND ECONOMY

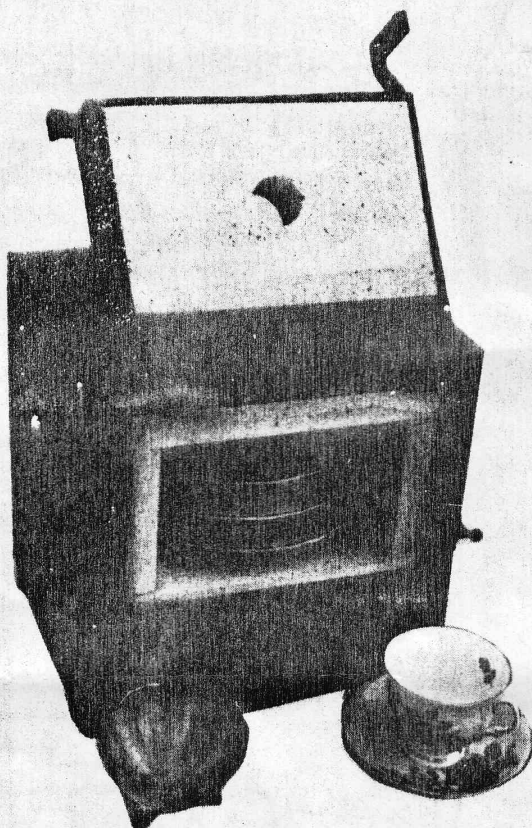
As added protection for you, each Kiln is fitted with a safety switch which cuts off the power when the door is opened.

The Kilns, being **FAST FIRING**, have surprisingly low operating costs.

Incidentally.....each Kiln comes complete with kiln furniture and a firing chart is also provided.

TEACHERS

These Kilns are a fantastic aid to teaching. Now you can fire a student's work and see the results during the same day's class.



CHINA PAINTING KILN

"MODEL E1" 850 \$370.00

This is JUNIOR, the smaller of our China Painting Kilns. This is the original MINI Kiln designed by Jim Freeman for his famous painter wife, Norma.

Don't be fooled by its size. Junior can handle three six inch plates with ease and fires in thirty (30) minutes.

Weighing only 10 k.g. this Kiln is light enough to carry to Classes, Seminars or even to a friend's house for a firing session.

Ideal for HOUSES, FLATS or even CARAVANS.

SPECIFICATIONS

240 Volt 1.8 K.W. Single Phase

	INTERIOR	EXTERIOR
HEIGHT	4½"	11"
WIDTH	7"	11"
DEPTH	7"	11½"

APPROVED BY THE AUSTRALIAN ELECTRICITY COMMISSION

DOLLS! DOLLS! DOLLS! DOLLS!

DOLL KILN

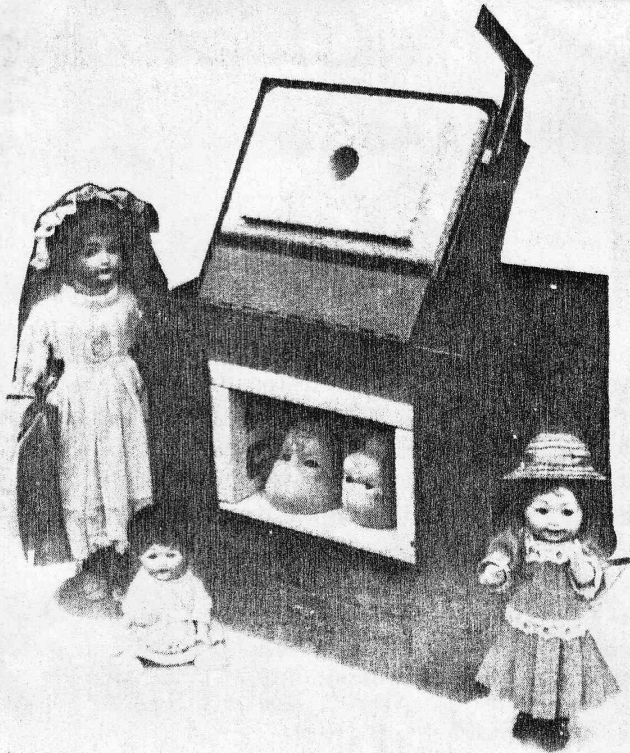
"MODEL E2" 1250 \$445.00

This little beauty, a doll maker's delight, has been in production for over 2 years and is producing tremendous results for both the hobbyist and the professional.

Maree Massey, creative doll sculptor, has been firing this kiln, 2 or 3 times a day and 80% of her export orders are produced in it.

Fires in 80-90 minutes and being portable, is ideal for demonstrations, seminars and classes. Weighs 16 k.g.

For the translucent gloss that is so hard to achieve, fire to cone 6 and soak for 7 - 10 minutes on setting 4.



SPECIFICATIONS

240 Volt 2.4 K.W. Single Phase

	INTERIOR	EXTERIOR
HEIGHT	4½"	13"
WIDTH	7"	13"
DEPTH	7"	14½"

CHINA PAINTING KILN

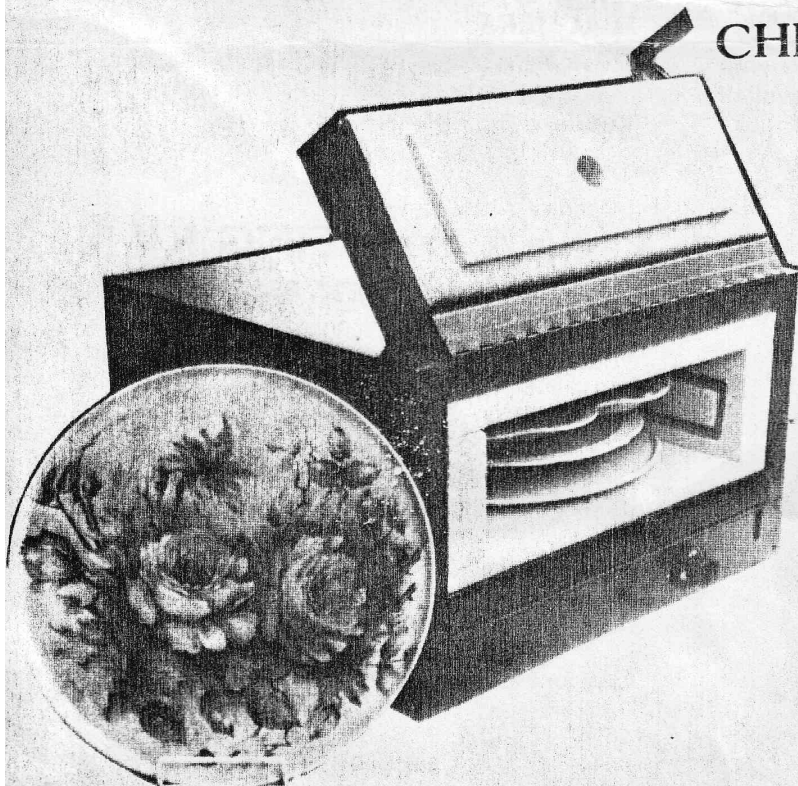
"MODEL E3" 850 \$578.00

A CHINA PAINTER'S DREAM

AT LAST the Kiln you have been waiting for. The "PAV" is the latest and largest of our range and has been designed to fill the gap between the large kilns and the small.

This model will hold 3 Pavlova plates or a larger number of small items and weighs 33 k.g.

Fires in 100 - 110 minutes.

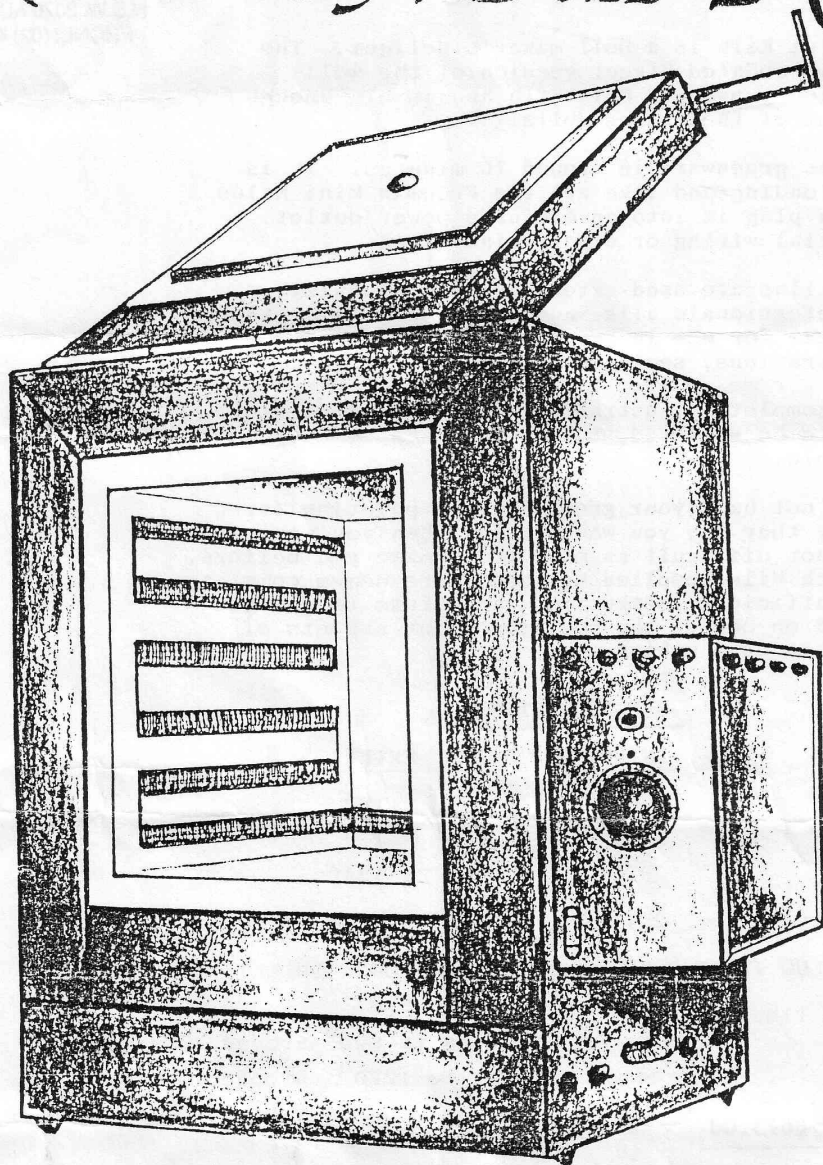


SPECIFICATIONS

240 Volt 2.4 K.W. Single Phase

	INTERIOR	EXTERIOR
HEIGHT	4½"	12"
WIDTH	13½"	19½"
DEPTH	13½"	17"

Model E5 Doll Kiln



* **FIRING CHAMBER** 9" x 7 1/2" x 7 1/2"
HIGH WIDE DEEP.

THIS LITTLE BEAUTY, A DOLLMAKER'S DELIGHT, IS PRODUCING TREMENDOUS RESULTS FOR BOTH THE 'HOBBYIST' AND THE PROFESSIONAL.

THIS MODEL WILL FIRE TO 1220°C. IN APPROX. 80 MINUTES AND TO 800°C. IN 40 MINUTES.

- * WEIGHS ONLY 25 KILOGRAMS.
- * PLUGS INTO A NORMAL POWER POINT.
- * QUALITY CONSTRUCTION.
- * COLOUR: BRONZE HAMMERTONE.
- * ONE PIECE A1 KANTHAL ELEMENT.

THE FREEMAN E5

DOLL MAKER'S KILN

PORCELAIN ARTS CENTRE
14 MOORE AVE.,
WEST LINDFIELD, SYDNEY.
N.S.W. 2070 AUSTRALIA.
PHONE: (02) 416 6428

This Mini Kiln is a Doll maker's delight. The E5 is an updated bigger version of the well loved and proven E2 Doll Kiln and is big enough for most of the larger dolls.

It fires greenware in around 70 minutes. It is front loading and like all the Freeman Mini Kilns you can plug it into an ordinary power outlet. No special wiring or electricians fees.

These kilns are used extensively by hobbyists and professionals alike and, being portable, they are ideal for use in the house or garage, at demonstrations, seminars or classes.

Being completely Australian made, should service or parts be required, they are always readily available.

So why not have your greenware and painting fired exactly the way you want it and when you want it. It is not difficult as many would make you believe, and each kiln supplied by the Centre comes complete with sufficient instructions and hints to get you started on one of the most important aspects of porcelain doll making.

SPECIFICATIONS

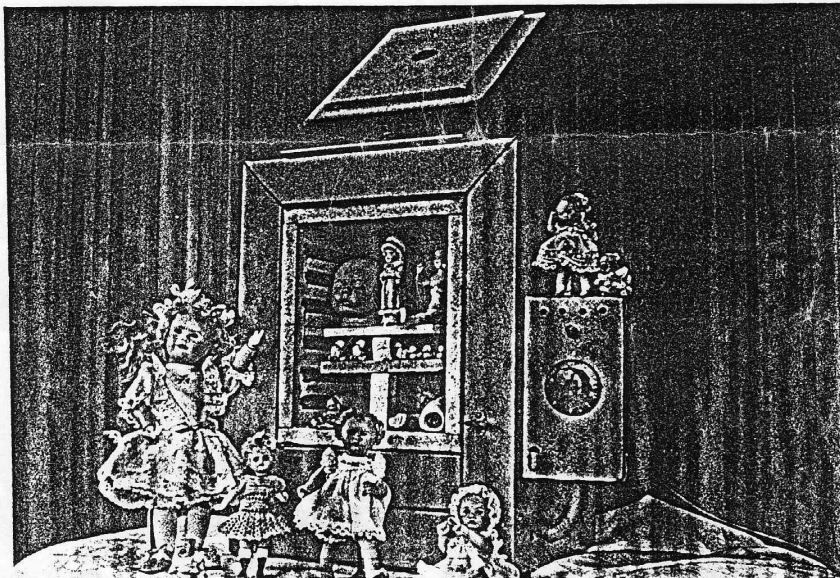
	<u>INTERIOR</u>	<u>EXTERIOR</u>	
HEIGHT	9"	18"	
WIDTH	7½"	18"	
DEPTH	7½"	13½"	
240 volt	2.4 K.W.	Single Phase	Approx. 25 kg

JUST PLUG IN AT HOME INTO STANDARD POWER OUTLET

FIRING TIMES :

China Paint firing to 800° around 37 minutes
Greenware firing to 1220° around 70 minutes

CCST: \$675.00



FREEMAN MINI-KILN

MODEL E5

TO REPLACE SWITCHES

Remove cover plate from control box.

Make note of the wiring to the switches, then disconnect.

Remove and replace switch(es) and reconnect wiring.

Replace cover.

TO REPLACE ELEMENT

Unscrew door hinge from kiln body. Leave hinge attached to door and remove base plate.

Remove element tails and wiring from the connector block. Remove glass tubing from element tails.

Remove the screws retaining steel back to kiln plus the screws retaining the back to the floor.

Carefully prise steel back from the body.

Remove the rear two element bricks by pushing gently from the inside and supporting from the outside. If necessary, loosen floor retaining screws.

Carefully remove element from kiln walls and withdraw element tails.

Fit new element as follows:- thread the tails through the floor of the kiln, one side at a time and position element coils in the grooves. If necessary the element coils can be stretched or compressed to sit snugly.

Replace the rear element bricks and check that they have been replaced as removed. Tighten floor screws.

Cut tails to suitable length and replace glass tubing.

Reconnect tails and wiring in the connector block.

Replace base plate.

Turn the kiln right side up and replace the door.

Ensure that the element is sitting in the rear groove.

Adjust door if necessary.